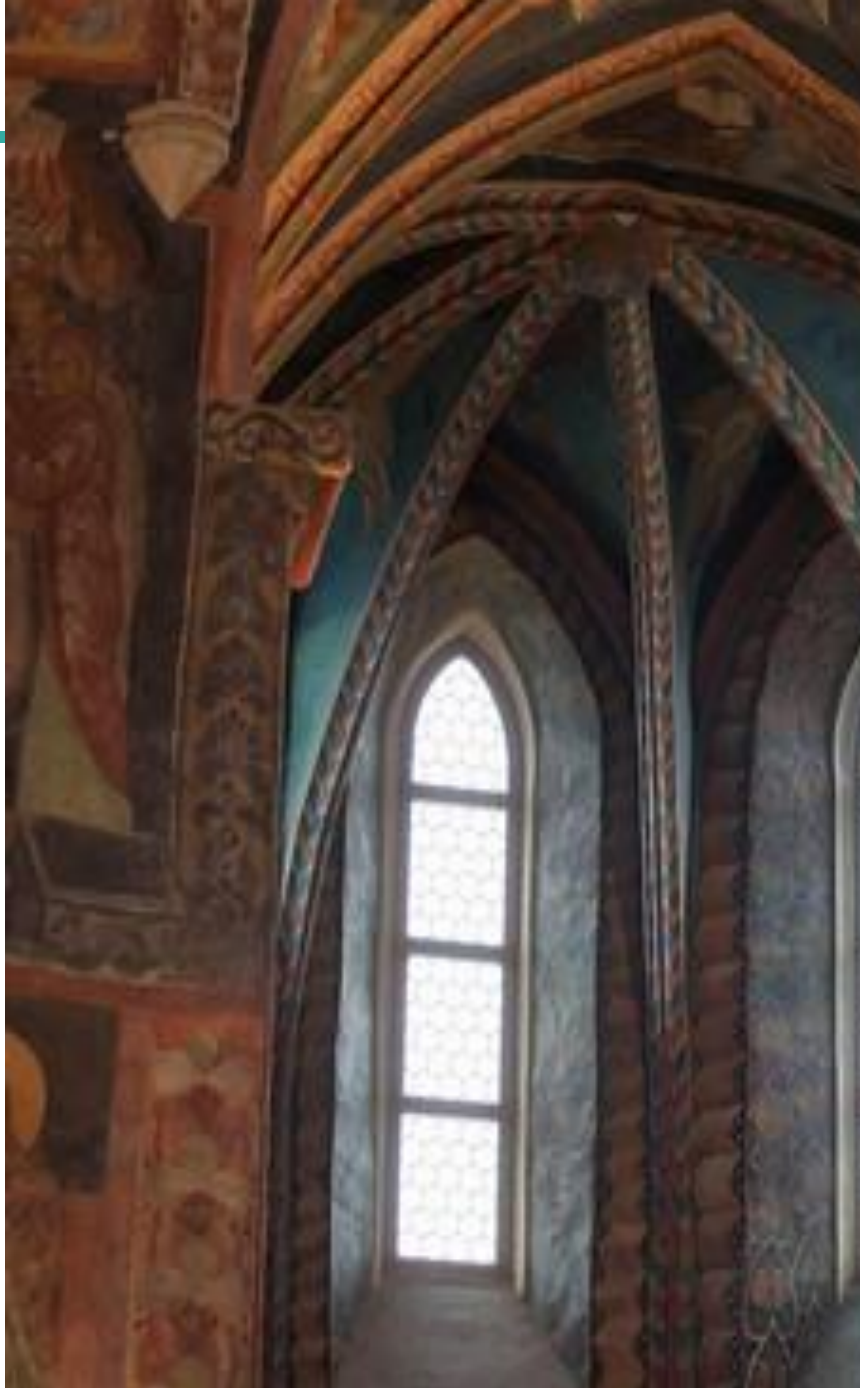

WELCOME GUIDE



15-17 MARCH 2023

**MEDICAL UNIVERSITY OF LUBLIN
POLAND**



Digitalization in
learning practice
placement



Content:

- General information 3
 - Collegium Novum 3
 - Contact person 3
- Travel 4
 - Arrival in Lublin..... 4
 - Arrival in Warsaw 4
 - Railway station 5
 - Public Transport in Lublin 5
- Accommodation 6
- Information about Poland 10
 - Currency 10
 - Working hours 10
 - Polish Post 10
 - Medical Aid..... 11
- What to do in Lublin? 12
 - General information 12
 - Shopping..... 15

General information

The meeting will be hosted by the **Medical University of Lublin**. We look forward to welcome you in Lublin. Lublin is a true **City of Inspiration**. Some early information about our second meeting is providing in this document.

The meeting will take place at one of the campuses of the MUL. Our meeting will take place in Collegium Novum ([Aleje Racławickie 1](#) Street, Lublin).

You can find MUL buildings also here:



Collegium Novum

Contact person

Foreign participants

Beata Dobrowolska

Phone: +48 797 197 715

E-mail: beata.dobrowolska@umlub.pl

Polish participants

Marta Szara

Phone +48 505 447 272

E-mail: martaszara@umlub.pl

Travel

Arrival in Lublin

The closest airport to Lublin is the Lublin Airport located in Świdnik about 18 km from City Centre. If you arrive to Lublin by plane, there are two options of getting from the airport to Lublin:

- **CityBus** – Line 005 – Bus service rapidly connecting the terminal with Lublin City Centre. It runs every day from 5:25 to 18:55. Please, check [timetable](#).
- **Taxi/Cab** – Taxi services at the airport are provided by licensed taxi company recommended by Lublin Airport. There is no taxi rank in front of the terminal building. A passenger willing to travel by a recommended taxi service from the airport is requested to approach the desk with a paging system inside the terminal. Your driver will be called in immediately.
- **You are able also to getting off from the airport by Uber or Bolt.**

Arrival in Warsaw

Chopin Airport in Warsaw is located 180 km from Lublin. Many airlines currently operate out of this airport with flights to each main city in Europe and elsewhere. If you arrive to Warsaw by plane, there are three options of getting from the airport to Lublin:

- Chopin Airport is directly connected by rail with the Warsaw. Connections are made by three rail carriers: Szybka Kolej Miejska, Koleje Mazowieckie and Intercity. At the Warszawa-Centralna, Warszawa-Wschodnia, Warszawa-Zachodnia, Warszawa-Śródmieście stations there are convenient transfers to many places throughout Poland. The Warsaw to Lublin train distance is approximately 152 km. **Due to the Modernization of the Warsaw Railway Junction, we recommend traveling from Warszawa Wschodnia station.** The train time to Lublin from Warsaw is on average 1 h 40 min. You can take the first train from Warsaw to Lublin at 6: 56 AM. The last train from Warsaw to Lublin that you can take departs at 7: 44 PM. If you book a train ticket from Warsaw to Lublin within the next 7 days, you can find tickets to cost on average (€11) one way. However, we recommend booking your train in advance to get access to the best prices. Train tickets between Warsaw and Lublin are generally on sale a few months before the planned departure date.

Please consult the website of the [Polish State Railways](#) (PKP) for information about schedules and fares.

- Bus – You can take the [Contbus](#) or [FlixBus](#) from Warsaw to Lublin - bus time to Lublin from Warsaw is on average 2 h 30 min.
- Chopin Airport is directly connected by plane with the Airport Lublin – please consult the website of the [Polish Airlines LOT](#).

Railway station

If you arrive at the railway station in Lublin, the place of the event (Aleje Racławickie 1) is located at a 35-minute walk from the station. There are a lot of buses between the station and City Centre. The ride takes 15 minutes. The following transit lines have routes that pass near Dworzec PKP Lublin Główny:

- Bus: 11, 13, 30
- Trolleybus: 155, 151

Public Transport in Lublin

The public transport service is provided by 13 trolleybus lines, 58 bus lines and 3 night service lines. Most of the vehicles have the surveillance cameras installed inside for the passengers' safety. [Please see more information about public transport](#). You may check timetables at: [MPK website](#). A journey planner that makes travelling around the city easier. You can use this planner to quickly find a connection between your starting point and a selected point of destination: [jakdojade app](#).

- Ticket fares, e-ticket: [ZTM website](#)
- Tickets are sold in street Kiosks or newsagent's stands, ticket machines.
- Remember that not all ticket machines are equipped with payment card readers or with slots for banknotes (with coins being the only payment option).

Accommodation

We suggest the use of [booking.com](https://www.booking.com) to find an appropriate accommodation. The hotels in Lublin are very accommodating to people visiting the city. Most of the hotels are located in the city center, with accessible links to public transportation.

We would like to provide some suggestions for hotels in Lublin. These are optional, we have not contacted the hotels ourselves but these hotels seem to have good reviews.

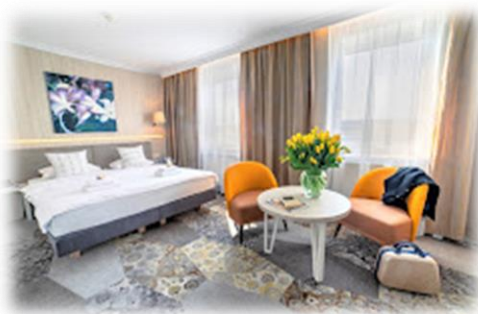
- [Hotel Victoria***](#)

Narutowicza St. 58/60, 20-016 Lublin

phone: +48 81 532 70 11,

mob.:+48 577 900 603,

e-mail: info@victorialublin.pl



- [Hotel Wieniawski***](#)

Sądowa St. 6, 20-027 Lublin,

phone: +48 81 45 99 200,

mob.: +48 515 595 507,

e-mail: info@hotelwieniawski.pl



- [Hotel Locomotiva***](#),
Północna St. 28C, 20-064 Lublin,
phone: +48 81 44 11 999,
e-mail: info@locomotiva.pl



- [Hotel Campanile***](#),
Lubomelska St. 14-16, 20-072 Lublin,
phone: +48 223 072 337,
e-mail: lublin@campanile.com



- [Hotel Hilton by Hampton](#)
Kompozytorów Polskich St. 1, 20-848 Lublin,
phone: +48 81 477 90 50,
mob.: 504 041 628,
e-mail: LUZHX_Hampton@hilton.com



- [Hotel Mercure***](#),
Racławickie St. 12, 20-037 Lublin,
phone: +48 81 533 20 61,
e-mail: H3404@accor.com



- [Hotel Logos*](#),
Akademicka St. 4, 20-033 Lublin,
phone: +48 81 533 82 85, +48 81 533 82 86,
e-mail: recepcja@hotellogos.lublin.pl



- [Hotel Forum***](#),
Obywatelska St. 8, 20-092 Lublin,
phone: +48 81 452 85 00, mob.: +48 519 404 408,
e-mail: recepcja@hotelforumlublin.pl



- [Focus Hotel Premium](#)
Podzamcze St. 1, 20-126 Lublin,
phone: +48 81 516 55 55,
e-mail: lublin@focushotels.pl



- [B&B Hotel Lublin Centrum](#),
Dolna 3 Maja St. 7, 20-079 Lublin,
phone: +48 81 440 90 90,
e-mail: lublin@hotelbb.com



- [Hotel Ilan Lublin****](#),
ul. Lubartowska 85, 20-123 Lublin,
phone: +48 81 745 03 47 , mob.: +48 506 196 017,
e-mail: recepcja@hotelilan.pl



Information about Poland

Currency

In Poland, **Polish Złoty (PLN)** is used as an official currency

1 PLN = 100 groszy. Notes come in 500, 200, 100, 50, 20 and 10 PLN denominations and coins in 50, 20, 10, 5, 2, and 1 GR.

The Polish Złoty is freely convertible on world currency markets.

Working hours

Visiting hours in most of Polish monuments are from 9 or 10 a.m. till 5 or 6 p.m. A number of museums, galleries and castles are closed on Mondays.

The [National Museum in Lublin](#) is open daily from 9 a.m. to 9 p. m.

Shops in Lublin are generally open Monday to Saturday from 7 a.m. to 9 p.m. or later.

Polish Post

Post offices in Poland are generally open between 8 a.m. and 6 p.m., on Saturdays between 8 a.m. and 12 a.m.

Cost of Stamps of standard letters and postcards:

- within Poland 3,6 PLN
- to European countries 8 PLN
- to Non-European countries 8 PLN and more

Medical Aid

Primary care

After 6 p.m. to 8 a.m. you can use **night and holiday primary care** at Biernackiego 9 Street, 20-089 Lublin.

Emergency cases

If you are faced with an urgent need for medical attention at a time when doctors' offices are not open, you should go to the one of the followings emergency service:

Emergency Room

Independent Clinical Hospital no. 4

Jaczewskiego 8 Street, 20-954 Lublin

Phone.: 81 724 45 51, 81 724 45 52

Doctor's phone: 81 724 42 85

Dental emergency:

Specialist Clinic

Hipoteczna 4 Street

Lublin, 20-027

What to do in Lublin?

General information

The greatest empire in Renaissance Europe was born in Lublin in Lesser Poland in 1569. The Union of Lublin created the Polish-Lithuanian Commonwealth, and Lublin, on the old road from Kraków to Vilnius, was the place where the document was signed.

Lublin Castle

Among the oldest royal seats in Poland, Lublin Castle was founded on its namesake hill in the 12th century by the High Duke Casimir II the Just. In the Renaissance body of the castle are exhibitions for the Museum of Lublin, charting the history of the city within the Kingdom of Poland and the Polish-Lithuanian Commonwealth. On 15 May 2020, the Lublin Museum was nationalized, and therefore officially promoted to the rank of a National Museum.



Lublin Castle

Chapel of the Holy Trinity



*Chapel of the Holy Trinity,
Source: Cezary Wojtkowski / shutterstock*

In the castle's courtyard is a chapel that would have been raised at the same time as the keep, and was then remodelled at the beginning of the 15th century at the behest of King Władysław Jagiełło.

This was when its interior was painted with Byzantine-style frescoes, completed in 1418 and proof of the cooperation between the Eastern Orthodox church and western Roman Catholicism. These paintings are in exceptional condition and evoke passages from the bible, but also have the only contemporary portraits of King Władysław Jagiełło.

Majdanek State Museum

The Majdanek is one of the Nazi regime's most complete camps as the retreating German army had no time to demolish the facility. In just under three years, almost 80,000 people were murdered in the main camp, and up to 130,000 people in the network of sub-camps attached to it.

The museum has moving artefacts sourced from other camps, together with archive photography and eyewitness accounts of what happened here.

The mausoleum piled with ashes, and the gas chamber with a wall stained blue from Zyklon B gas are both as disturbing as you'd expect.



Majdanek State Museum
Source: Store Norske Leksikon

Lublin Village Open Air Museum

Based on the Swedish "Skansen" model this open air museum in the Sławinek District 15 minutes from the city centre is a living snapshot of historic rural life in the Lublin Province. The museum covers almost 30 hectares and gives you the sense of being in the countryside as you navigate lanes and paths between reconstructed thatched cottages, windmills and workshops from the 18th and 19th centuries.



Lublin Village Museum
Source: wawritto / shutterstock

Old Town



Old Town, Lublin
Source: Neirfy / shutterstock

Between the castle in the north and the Rynek (Market Square) in the south, Lublin's Old Town is in a small but endearing package.

Along the central Grodzka street there are houses in various states of repair, but even the ones with the patina of age have a certain charm. The most handsome burgher houses await on the Rynek (Market Square): No. 8, for the

Lubomelski family, has a vivid red facade with a balustrade on its roof, while no. 12 for the Konopnica family has ornamental merlons above and beautifully ornamented window frames.

Lublin Underground Trail

After entering the dungeons at the Crown Tribunal you can set off on a Goonies-style adventure through the interlinked cellars of Lublin's 16th and 17th-century townhouses. The trail, set up in 2006, is almost 300 metres long and beckons you into 14 exhibition rooms. These have scale models showing Lublin's changing cityscape from the 700s to the end of



Lublin Underground Trail
Source: itsmejst / shutterstock

the 17th century.

Shopping

Lublin's souvenir shops are plentiful in the old centre and you'll find a number of art showrooms around the Rynek and on ul. Grodzka.

- Lublin Folk Art Gallery, Grodzka 14 street
- Stara Winiarnia, Rynek 7 street
- Cebularz, Rynek 8 street
- Szczupak Lublin, Jezuicka 1-3 Street